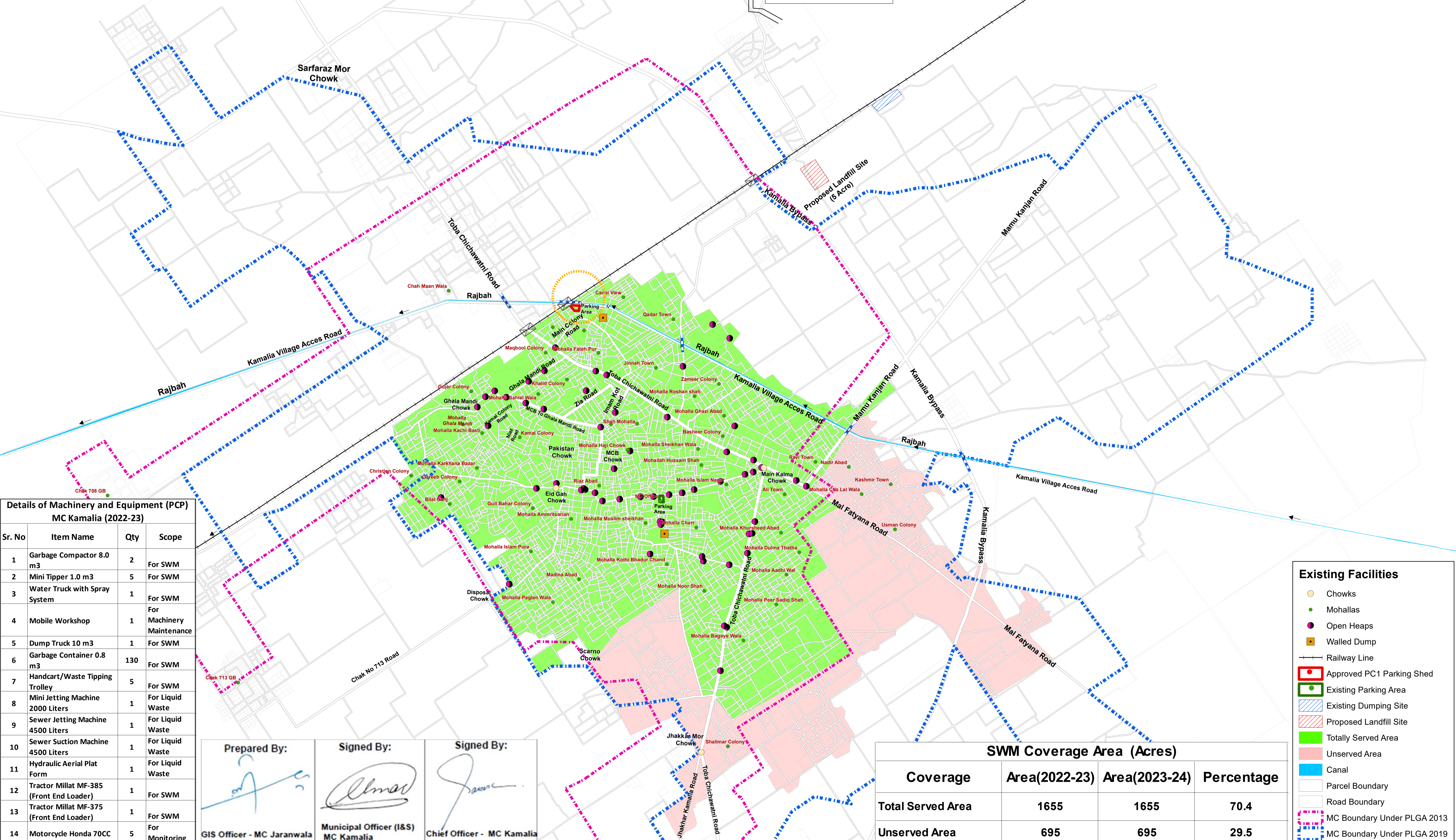


Solid Waste Management Map - Kamalia City (2023-24)



Closed Dumping Site
3 Km away from City
Near Chak 188 GB



Details of Machinery and Equipment (PCP) MC Kamalia (2022-23)

Sr. No	Item Name	Qty	Scope
1	Garbage Compactor 8.0 m3	2	For SWM
2	Mini Tipper 1.0 m3	5	For SWM
3	Water Truck with Spray System	1	For SWM
4	Mobile Workshop	1	For Machinery Maintenance
5	Dump Truck 10 m3	1	For SWM
6	Garbage Container 0.8 m3	130	For SWM
7	Handcart/Waste Tipping Trolley	5	For SWM
8	Mini Jetting Machine 2000 Liters	1	For Liquid Waste
9	Sewer Jetting Machine 4500 Liters	1	For Liquid Waste
10	Sewer Suction Machine 4500 Liters	1	For Liquid Waste
11	Hydraulic Aerial Plat Form	1	For Liquid Waste
12	Tractor Millat MF-385 (Front End Loader)	1	For SWM
13	Tractor Millat MF-375 (Front End Loader)	1	For SWM
14	Motorcycle Honda 70CC	5	For Monitoring

Prepared By: 
 Signed By:  Municipal Officer (I&S) MC Kamalia
 Signed By:  Chief Officer - MC Kamalia

Existing Facilities

- Chowks
- Mohallas
- Open Heaps
- Walled Dump
- Railway Line
- Approved PC1 Parking Shed
- Existing Parking Area
- Existing Dumping Site
- Proposed Landfill Site
- Totally Served Area
- Unserved Area
- Canal
- Parcel Boundary
- Road Boundary
- MC Boundary Under PLGA 2013
- MC Boundary Under PLGA 2019

SWM Coverage Area (Acres)

Coverage	Area(2022-23)	Area(2023-24)	Percentage
Total Served Area	1655	1655	70.4
Unserved Area	695	695	29.5